

# Lot # 8

## *Estates at Keystone*

1565 Cornerstone Circle  
Platteville, WI 53818

Lot Area: 0.59 acres  
25,505 sq. ft.

Lot Dimensions: 87' x 200'  
(At Building Setback Line)

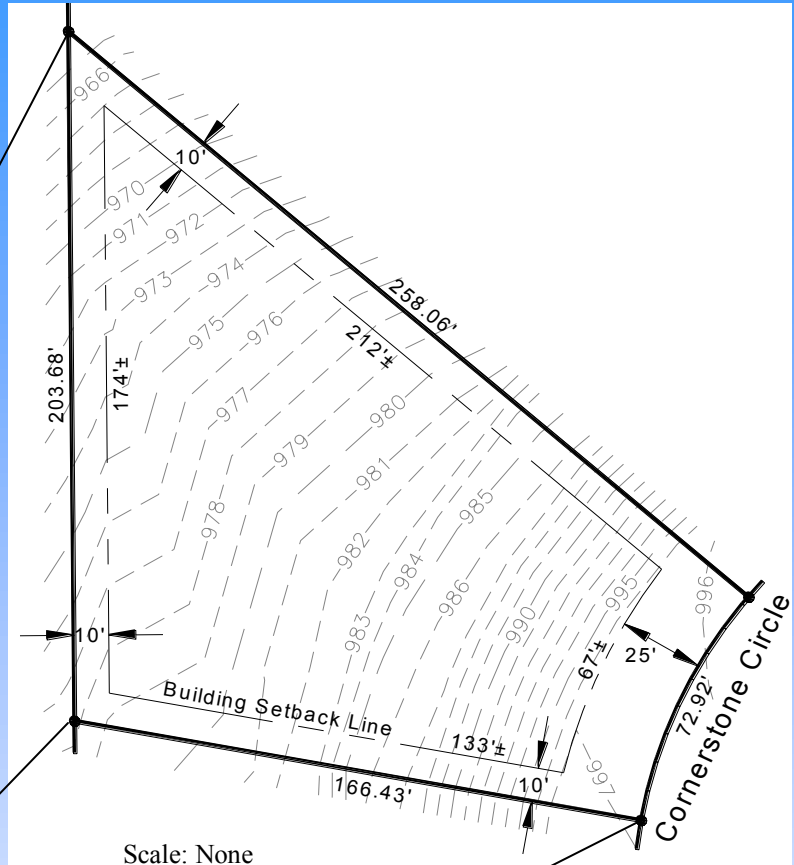
Frontage on Cornerstone Circle: 73'  
Rear Lot Width: 204'

Access: Cornerstone Circle

Zoning: R-1, One-Family Residential

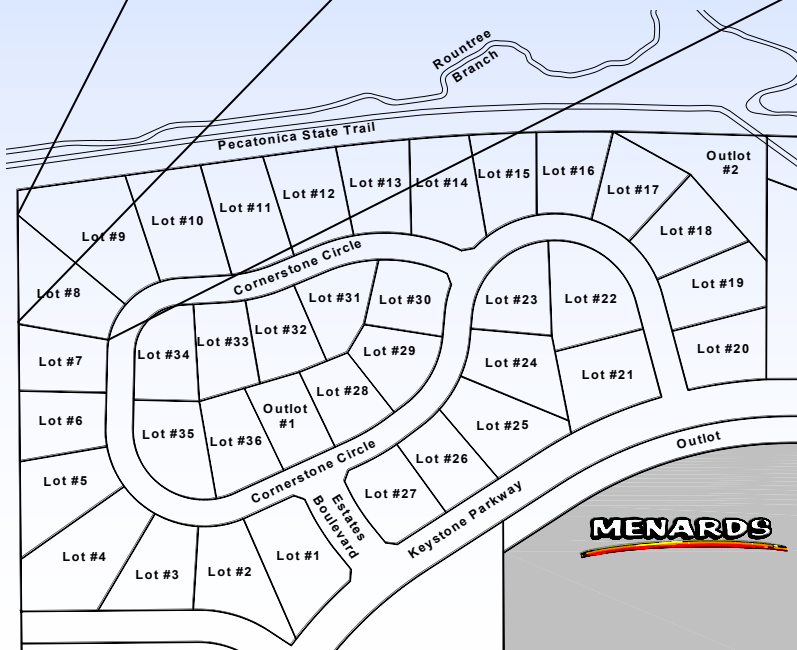
### Utilities Information:

- \* Water Service: 1" Copper
- \* Sanitary Sewer Lateral: 4" PVC
- \* Natural Gas: Alliant Energy
- \* Electric: Alliant Energy
- \* Telephone/Data/CATV: CenturyTel



Scale: None

\*Distances along curves  
are chord distances



### Platteville Development Group

P.O. Box 25

Platteville, WI 53818

Phone: (608) 348-3225

Email: [Info@plattevildevelopment.com](mailto:Info@plattevildevelopment.com)

### Contact: Jim Schneller

Phone: (608) 216-6014

Email:

[Jim.Schneller@plattevildevelopment.com](mailto:Jim.Schneller@plattevildevelopment.com)