

# Lot # 7

## *Estates at Keystone*

1575 Cornerstone Circle  
Platteville, WI 53818

Lot Area: 0.41 acres  
17,930 sq. ft.

Lot Dimensions: 103' x 162'  
(At Building Setback Line)

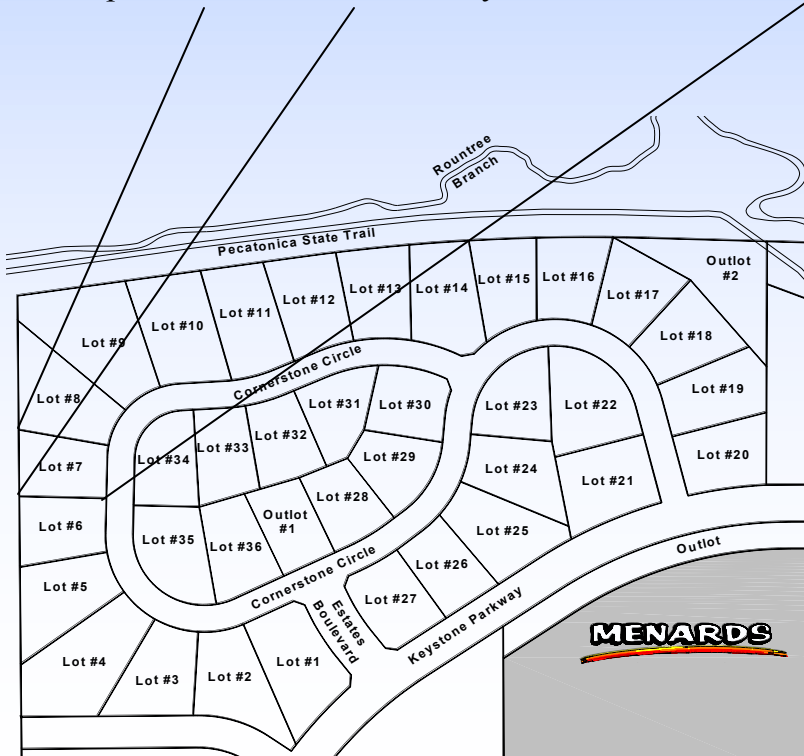
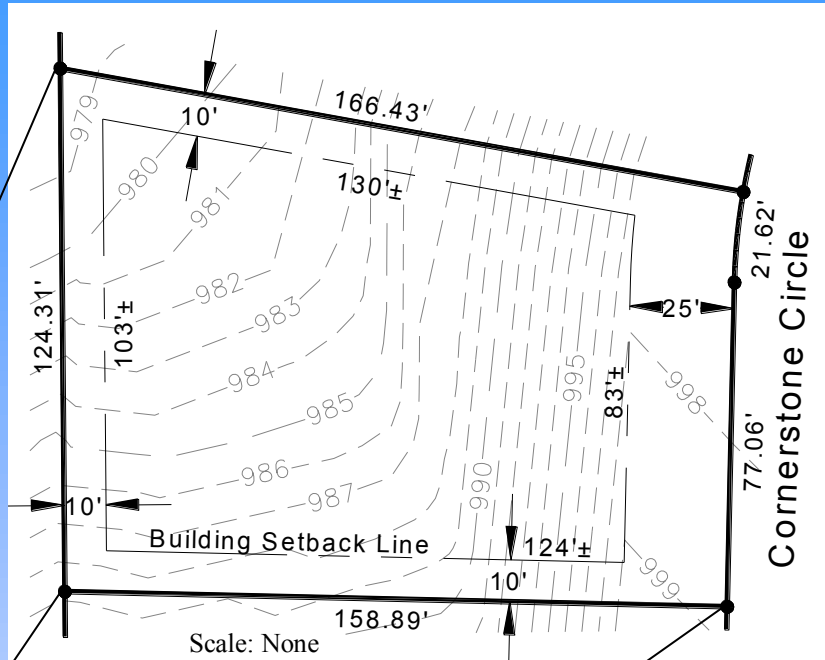
Frontage on Cornerstone Circle: 99'  
Rear Lot Width: 124'

Access: Cornerstone Circle

Zoning: R-1, One-Family Residential

### Utilities Information:

- \* Water Service: 1" Copper
- \* Sanitary Sewer Lateral: 4" PVC
- \* Natural Gas: Alliant Energy
- \* Electric: Alliant Energy
- \* Telephone/Data/CATV: CenturyTel



### Platteville Development Group

P.O. Box 25  
Platteville, WI 53818  
Phone: (608) 348-3225  
Email: [Info@plattevildevelopment.com](mailto:Info@plattevildevelopment.com)  
**Contact: Jim Schneller**  
Phone: (608) 216-6014  
Email: [Jim.Schneller@plattevildevelopment.com](mailto:Jim.Schneller@plattevildevelopment.com)