

Lot # 36

Estates at Keystone

1630 Cornerstone Circle
Platteville, WI 53818

Lot Area: 0.44 acres
19,372 sq. ft.

Lot Dimensions: 127' x 178'
(At Building Setback Line)

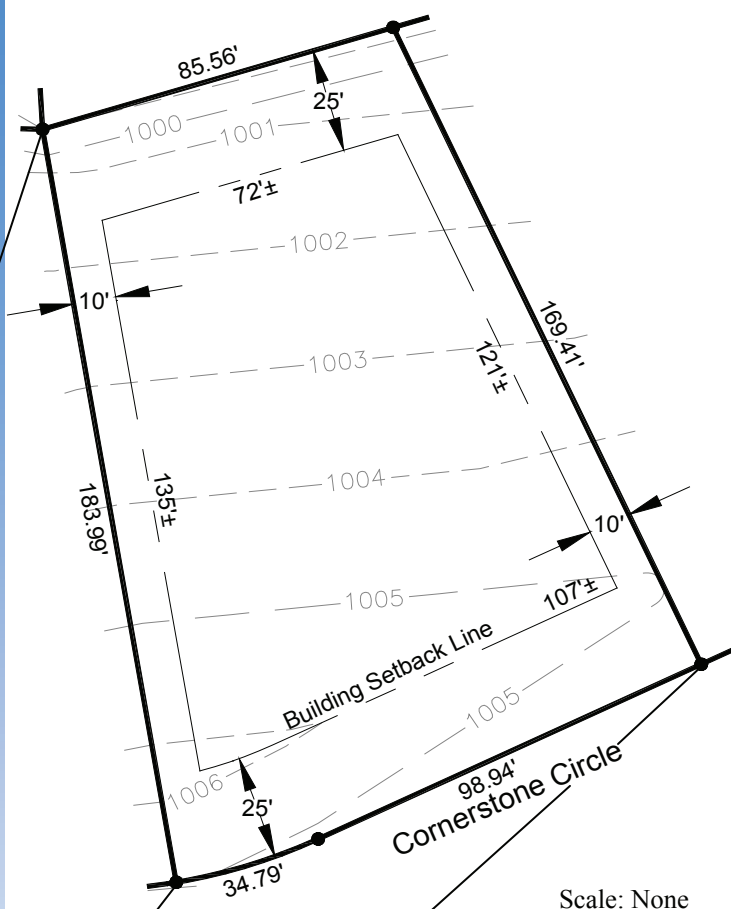
Frontage on Cornerstone Circle: 134'
Rear Lot Width: 86'

Access: Cornerstone Circle

Zoning: R-1, One-Family Residential

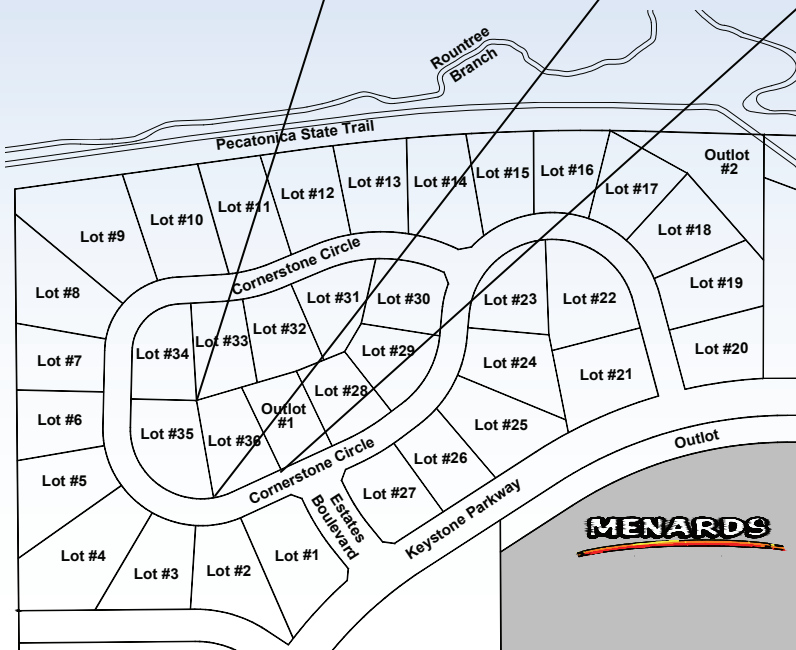
Utilities Information:

- * Water Service: 1" Copper
- * Sanitary Sewer Lateral: 4" PVC
- * Natural Gas: Alliant Energy
- * Electric: Alliant Energy
- * Telephone/Data/CATV: CenturyTel



Scale: None

*Distances along curves
are chord distances



Platteville Development Group

P.O. Box 25
Platteville, WI 53818
Phone: (608) 348-3225
Email: Info@plattevildevelopment.com
Contact: Jim Schneller
Phone: (608) 216-6014
Email:
Jim.Schneller@plattevildevelopment.com