

Lot # 27

Estates at Keystone

1645 Cornerstone Circle
Platteville, WI 53818

Lot Area: 0.44 acres
19,377 sq. ft.

Lot Dimensions: 120' x 156'
(At Building Setback Line)

Frontage on Cornerstone Circle: 101'

Frontage on Estates Boulevard: 137'
(No Access)

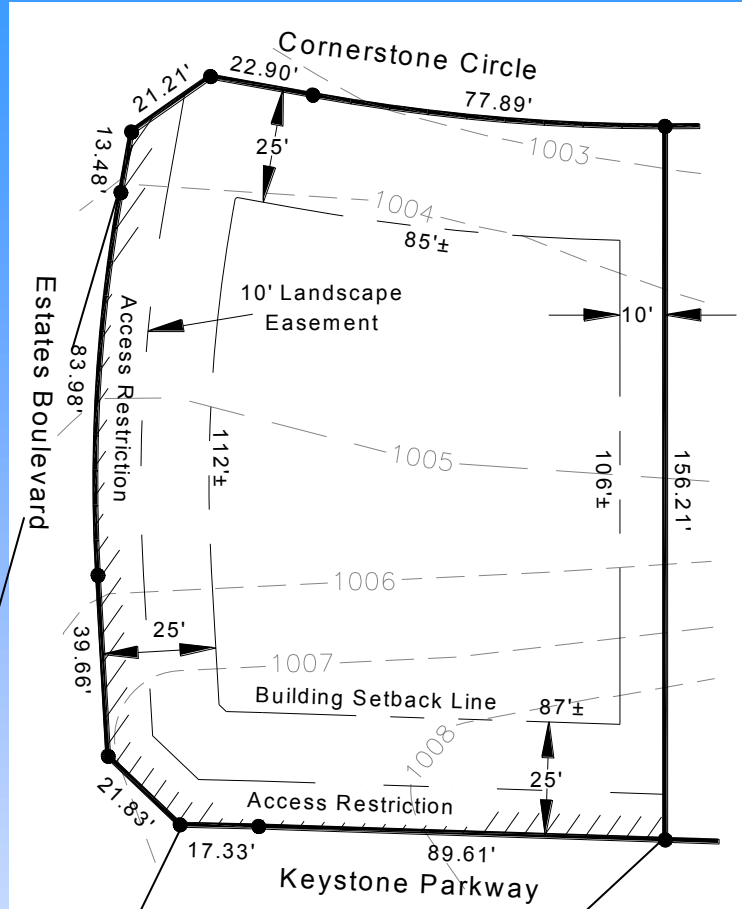
Frontage on Keystone Parkway: 107'
(No Access)

Access: Cornerstone Circle

Zoning: R-1, One-Family Residential

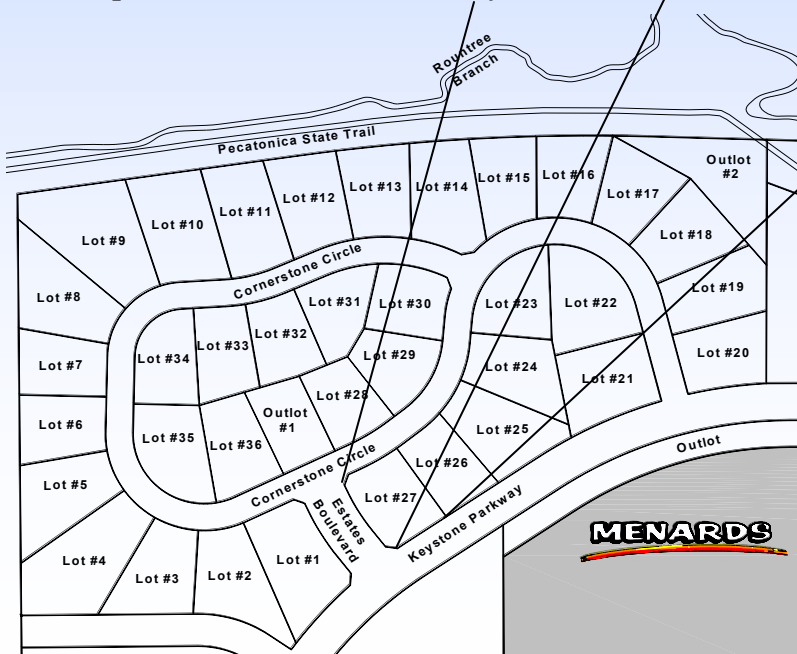
Utilities Information:

- * Water Service: 1" Copper
- * Sanitary Sewer Lateral: 4" PVC
- * Natural Gas: Alliant Energy
- * Electric: Alliant Energy
- * Telephone/Data/CATV: CenturyTel



Scale: None

*Distances along curves
are chord distances



Platteville Development Group

P.O. Box 25

Platteville, WI 53818

Phone: (608) 348-3225

Email: Info@plattevildevelopment.com

Contact: Jim Schneller

Phone: (608) 216-6014

Email:

Jim.Schneller@plattevildevelopment.com

MENARDS