

Lot # 26

Estates at Keystone

1655 Cornerstone Circle
Platteville, WI 53818

Lot Area: 0.40 acres
17,299 sq. ft.

Lot Dimensions: 103' x 162'
(At Building Setback Line)

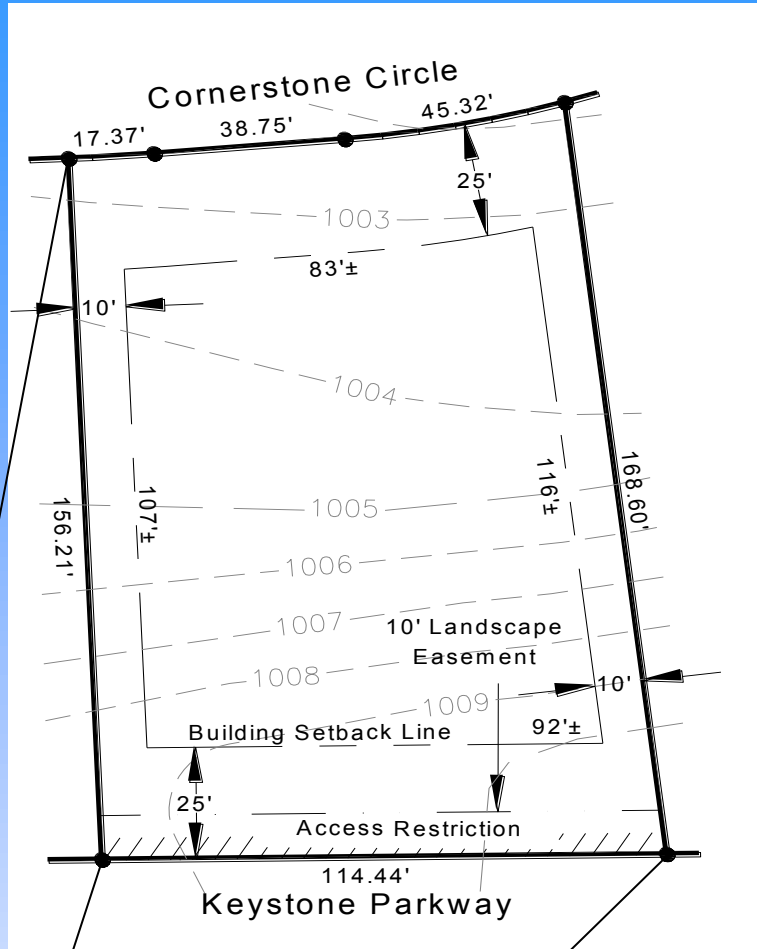
Frontage on Cornerstone Circle: 101'
Frontage on Keystone Parkway: 114'
(No Access)

Access: Cornerstone Circle

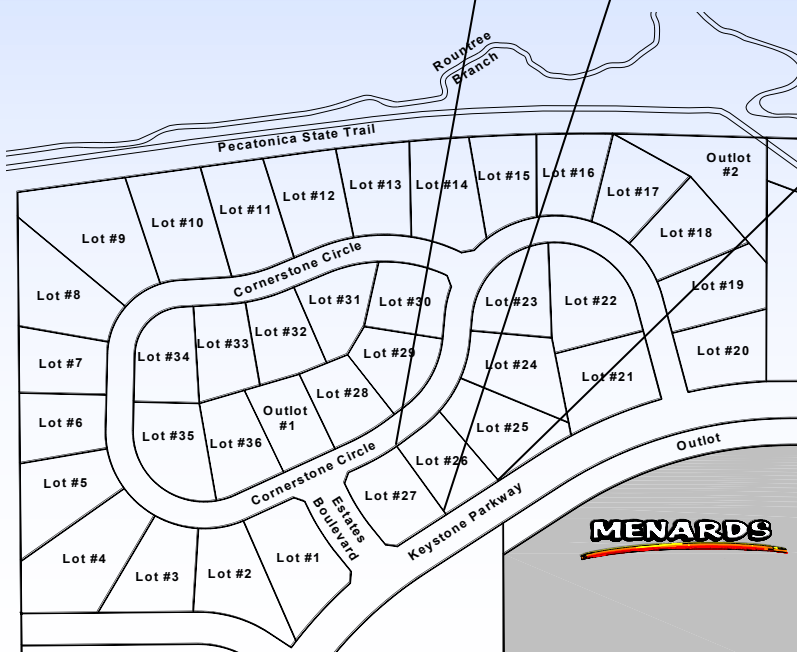
Zoning: R-1, One-Family Residential

Utilities Information:

- * Water Service: 1" Copper
- * Sanitary Sewer Lateral: 4" PVC
- * Natural Gas: Alliant Energy
- * Electric: Alliant Energy
- * Telephone/Data/CATV: CenturyTel



Scale: None
*Distances along curves
are chord distances



Platteville Development Group

P.O. Box 25
Platteville, WI 53818
Phone: (608) 348-3225
Email: Info@plattevildevelopment.com
Contact: Jim Schneller
Phone: (608) 216-6014
Email: Jim.Schneller@plattevildevelopment.com