

Lot # 21

Estates at Keystone

1705 Cornerstone Circle
Platteville, WI 53818

Lot Area: 0.55 acres
23,817 sq. ft.

Lot Dimensions: 131' x 165'
(At Building Setback Line)

Frontage on Cornerstone Circle: 116'
Frontage on Keystone Parkway: 163'
(No Access)

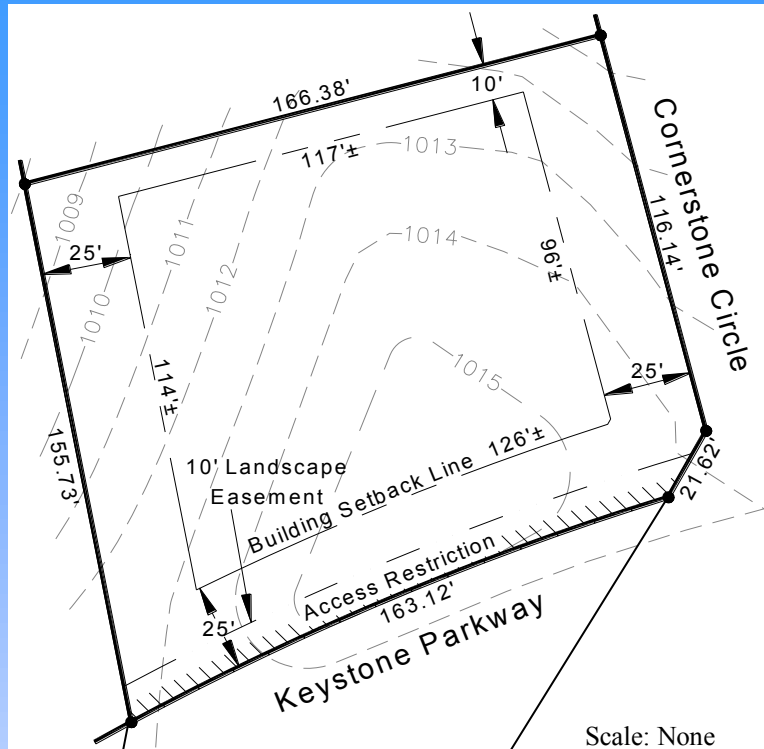
Rear Lot Width: 156'

Access: Cornerstone Circle

Zoning: R-1, One-Family Residential

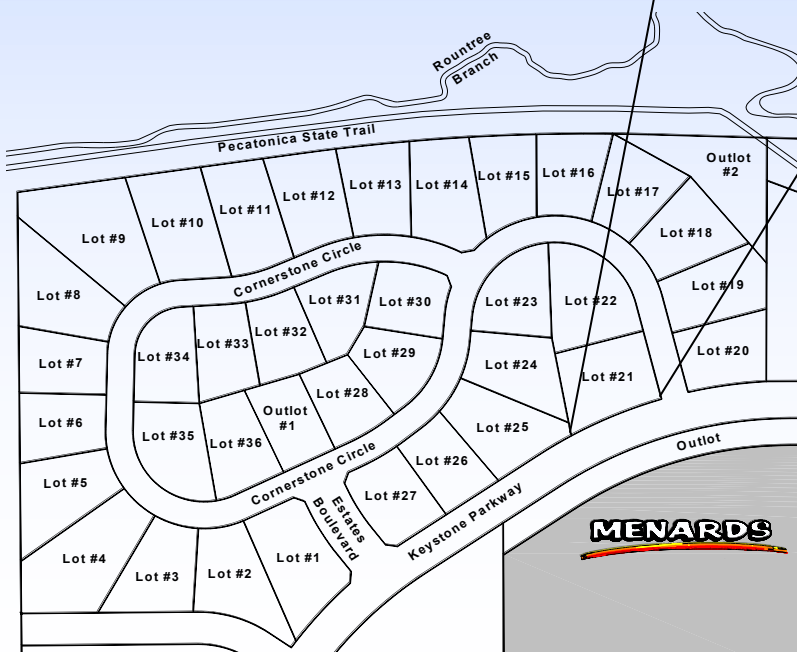
Utilities Information:

- * Water Service: 1" Copper
- * Sanitary Sewer Lateral: 4" PVC
- * Natural Gas: Alliant Energy
- * Electric: Alliant Energy
- * Telephone/Data/CATV: CenturyTel



Scale: None

*Distances along curves
are chord distances



Platteville Development Group

P.O. Box 25

Platteville, WI 53818

Phone: (608) 348-3225

Email: Info@plattevildevelopment.com

Contact: Jim Schneller

Phone: (608) 216-6014

Email:

Jim.Schneller@plattevildevelopment.com