

# Lot # 20

## *Estates at Keystone*

1702 Cornerstone Circle  
Platteville, WI 53818

Lot Area: 0.44 acres  
19,336 sq. ft.

Lot Dimensions: 115' x 160'  
(At Building Setback Line)

Frontage on Cornerstone Circle: 99'  
Frontage on Keystone Parkway: 129'  
(No Access)

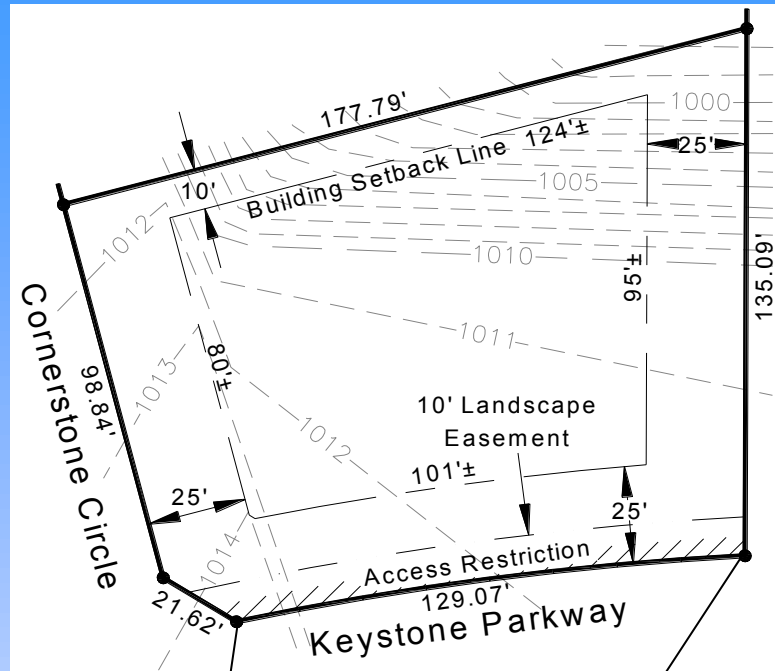
Rear Lot Width: 135'

Access: Cornerstone Circle

Zoning: R-1, One-Family Residential

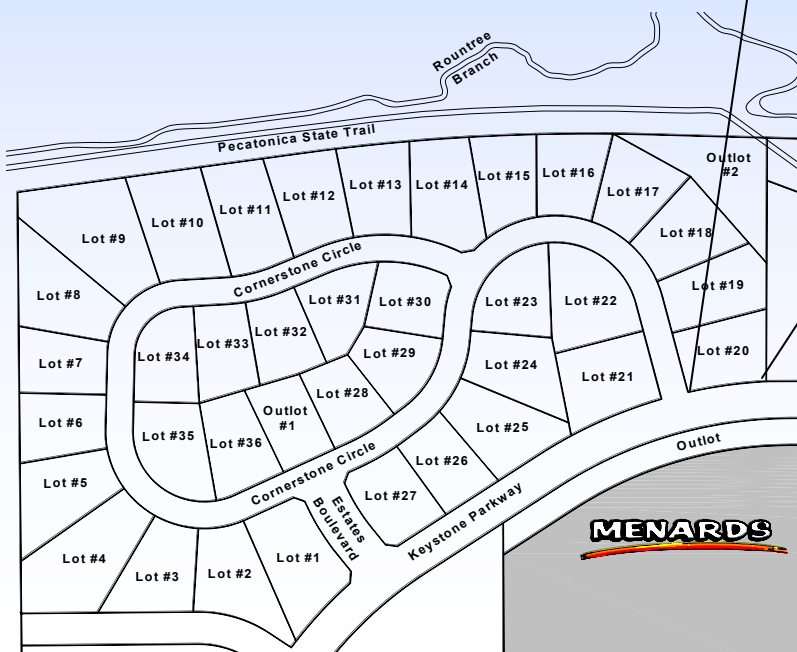
### Utilities Information:

- \* Water Service: 1" Copper
- \* Sanitary Sewer Lateral: 4" PVC
- \* Natural Gas: Alliant Energy
- \* Electric: Alliant Energy
- \* Telephone/Data/CATV: CenturyTel



Scale: None

\*Distances along curves  
are chord distances



### Platteville Development Group

P.O. Box 25

Platteville, WI 53818

Phone: (608) 348-3225

Email: [Info@plattevildevelopment.com](mailto:Info@plattevildevelopment.com)

**Contact: Jim Schneller**

Phone: (608) 216-6014

Email:

[Jim.Schneller@plattevildevelopment.com](mailto:Jim.Schneller@plattevildevelopment.com)