

Lot # 2

Estates at Keystone

1625 Cornerstone Circle
Platteville, WI 53818

Lot Area: 0.54 acres
23,648 sq. ft.

Lot Dimensions: 96' x 180'
(At Building Setback Line)

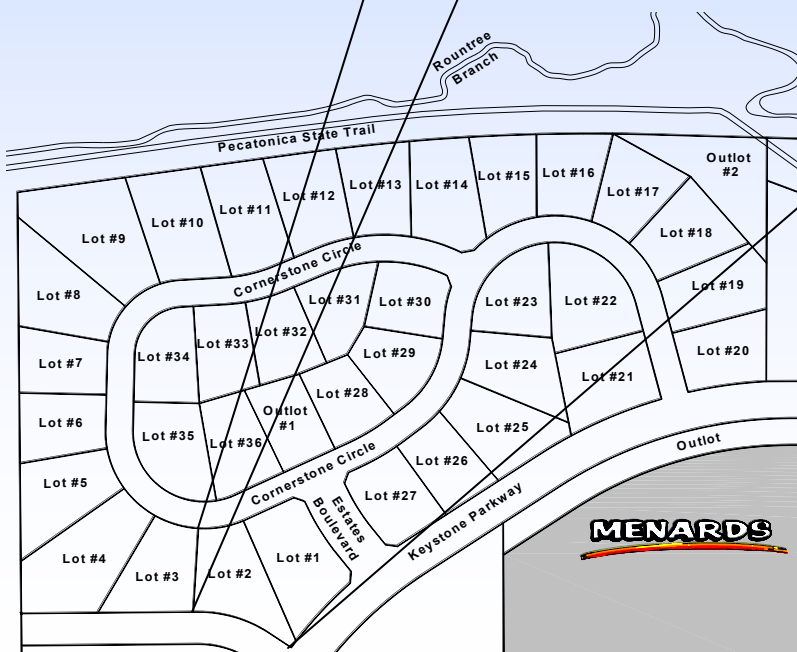
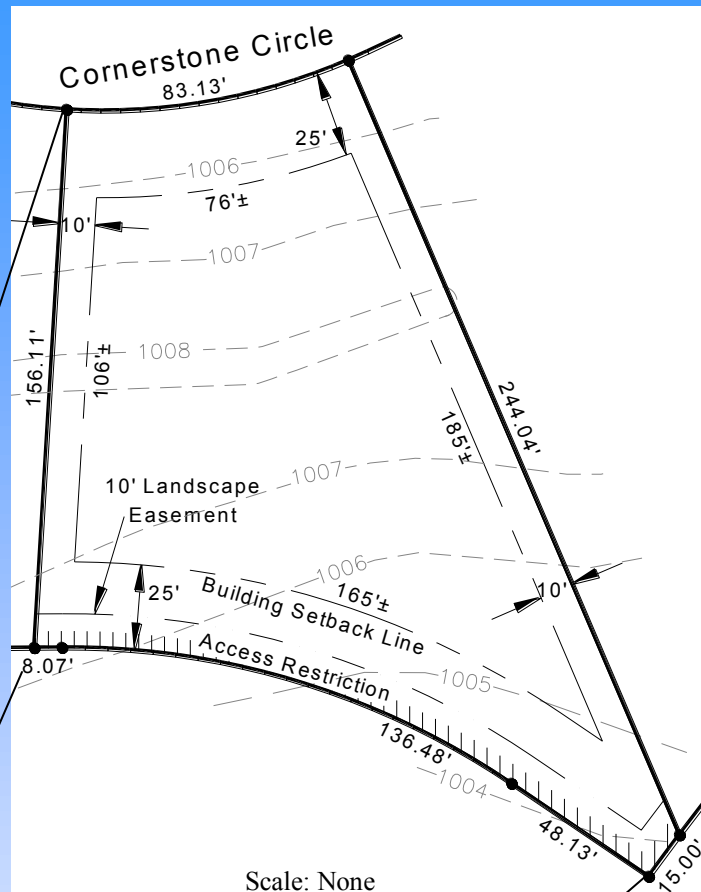
Frontage on Cornerstone Circle: 83'
Frontage on Ledge Stone: 193'
(No Access)

Access: Cornerstone Circle

Zoning: R-1, One-Family Residential

Utilities Information:

- * Water Service: 1" Copper
- * Sanitary Sewer Lateral: 4" PVC
- * Natural Gas: Alliant Energy
- * Electric: Alliant Energy
- * Telephone/Data/CATV: CenturyTel



Platteville Development Group

P.O. Box 25
Platteville, WI 53818
Phone: (608) 348-3225
Email: Info@plattevildevelopment.com
Contact: Jim Schneller
Phone: (608) 216-6014
Email: Jim.Schneller@plattevildevelopment.com