

# Lot # 13

## *Estates at Keystone*

1515 Cornerstone Circle  
Platteville, WI 53818

Lot Area: 0.47 acres  
20,438 sq. ft.

Lot Dimensions: 110' x 173'  
(At Building Setback Line)

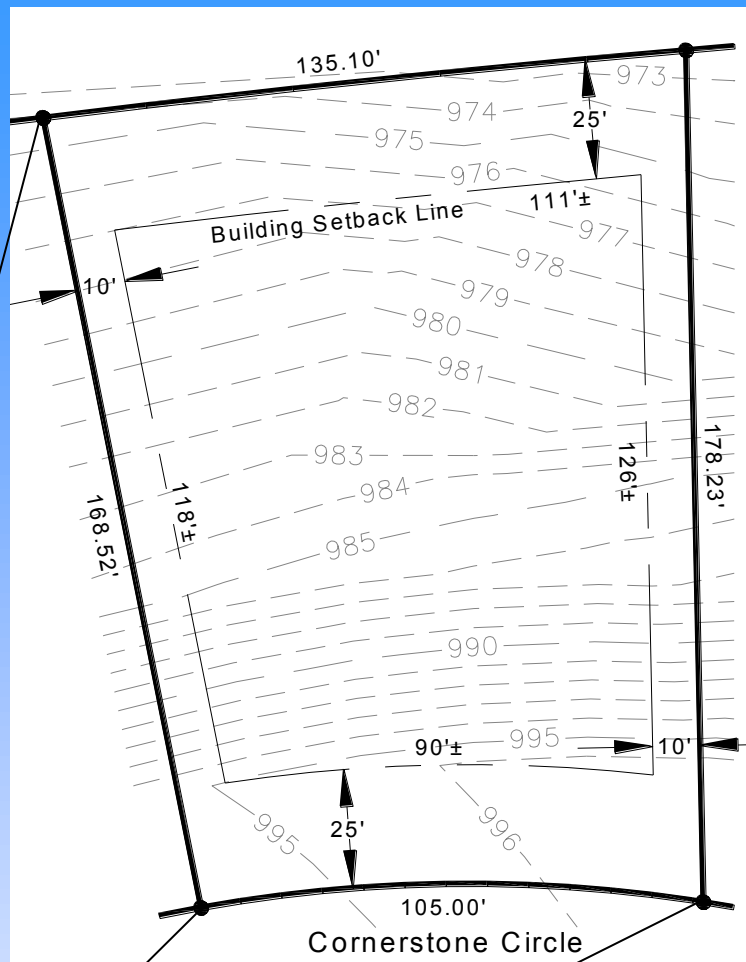
Frontage on Cornerstone Circle: 105'  
Rear Lot Width: 135'

Access: Cornerstone Circle

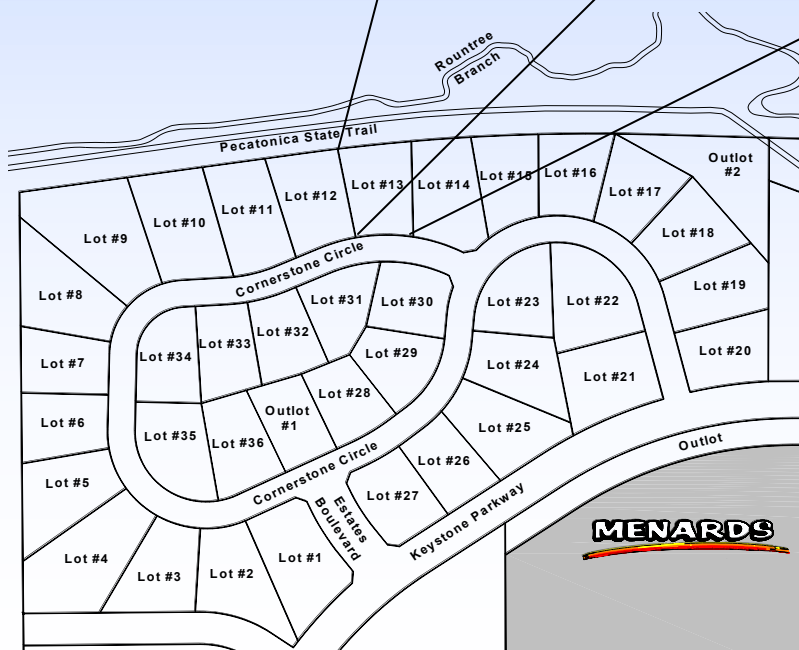
Zoning: R-1, One-Family Residential

### Utilities Information:

- \* Water Service: 1" Copper
- \* Sanitary Sewer Lateral: 4" PVC
- \* Natural Gas: Alliant Energy
- \* Electric: Alliant Energy
- \* Telephone/Data/CATV: CenturyTel



Scale: None  
\*Distances along curves  
are chord distances



### Platteville Development Group

P.O. Box 25  
Platteville, WI 53818  
Phone: (608) 348-3225  
Email: [Info@plattevildevelopment.com](mailto:Info@plattevildevelopment.com)  
**Contact: Jim Schneller**  
Phone: (608) 216-6014  
Email: [Jim.Schneller@plattevildevelopment.com](mailto:Jim.Schneller@plattevildevelopment.com)